



SalveoRx<sup>®</sup>  
ACADEMY

## Lesson 12.0: How to Backup and Restore

Version 1.00

This document was created by Salus Healthcare Informatics, Inc. (Salus). Ideas, concepts, and designs presented herein are the exclusive property of Salus unless otherwise specified.

Companies, names, and data used in examples herein are fictitious unless otherwise noted. No part of this document may be reproduced or transmitted in any form or by any means, electronic or mechanical, for any purpose, without the express written permission of Salus.

© 2010 Salus Healthcare Informatics, Inc.

Salus may have patents pending or pending patent applications, trademarks, copyrights, or other intellectual property rights covering subject matter in this document. The furnishing of this document does not give any license to these patents, trademarks, copyrights, or other intellectual property rights, except as expressly provided in any written license agreement from Salus.

## Lesson 12.0 – How to Backup and Restore

You can manually backup the data you stored in your SalveoRx and restore it in the same machine or at another machine.

- ⚠ It is important that you have the following settings in order to conduct a successful backup and/or restore procedure:
1. You need sufficient “access rights” to view and enable hidden system folders.
  2. You can only restore your backup to a machine with the same SalveoRx version.
  3. Make sure that SalveoRx is “not running” when doing a backup and restore.

Use the steps below to learn how to backup and restore your stored SalveoRx data.

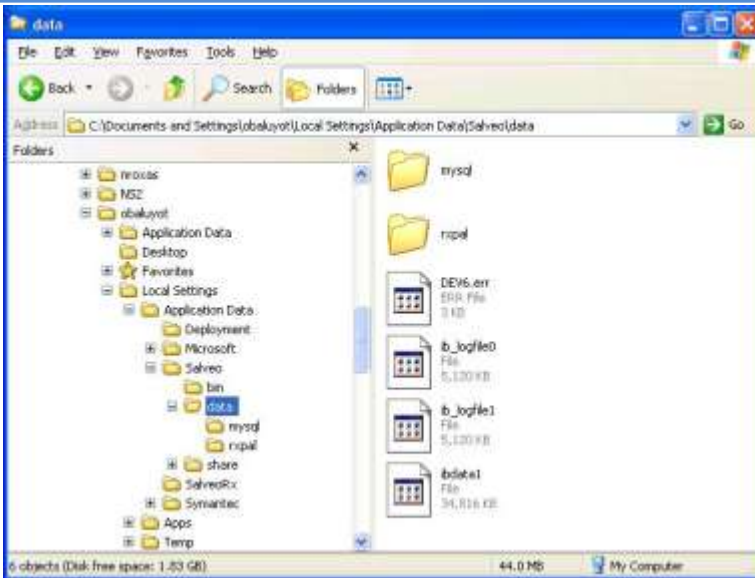
### Backup

Backup your stored data in any storage media (e.g. flash drives, external hard drives, CD’s, or DVD’s, etc) or save it locally in another location in your computer.

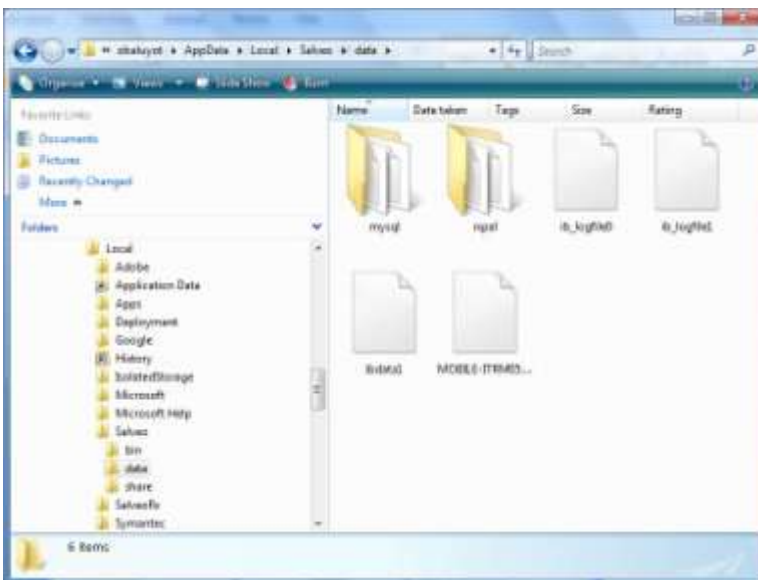
1. Open a “Windows Explorer” window.
2. Enter the following path in the “Address bar” given that you are using:
  - a. XP > **C:\Documents and Settings\WindowsUserName\Local Settings\Application Data\Salveo\data**
  - b. VISTA > **C:\Users\WindowsUserName\AppData\Local\Salveo\data**

- ⚠ Replace “WindowsUserName” with the username you used to login to your machine, e.g. admin, demo, user01, jdoe, jdacruz.

3. Click “Go” to open the “data” folder.
4. Copy the following files contained in this data folder to your target device or location:
  - a. ib\_logfile0
  - b. ib\_logfile1
  - c. ibdata1
5. If you are prompted to “overwrite”, click “Yes to All”.



**Figure 1.0: XP Backup – data folder**

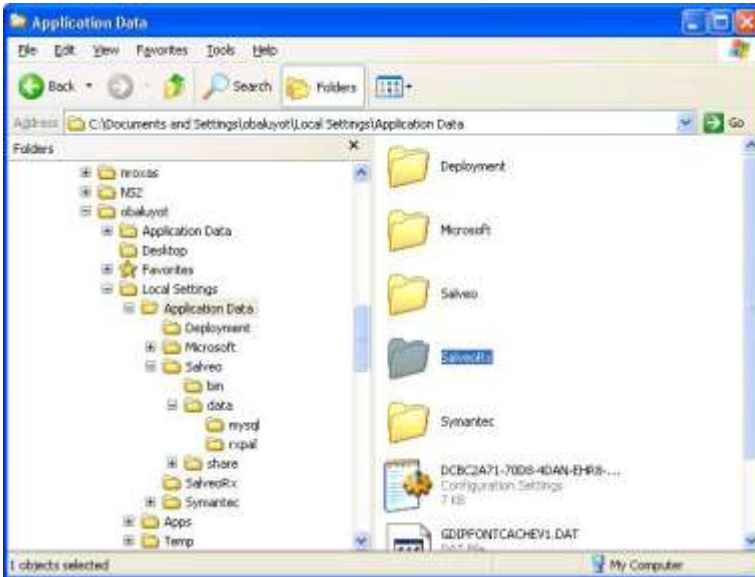


**Figure 2.0: Vista Backup – data folder**

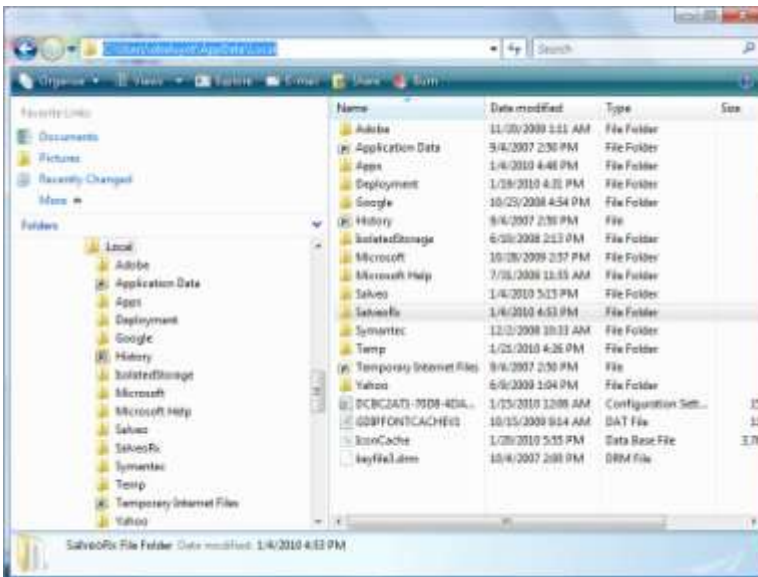
6. Open another “Windows Explorer” window.
7. Enter the following path in the “Address bar” given that you are using:
  - a. XP > **C:\Documents and Settings\WindowsUserName\Local Settings\Application Data**
  - b. VISTA > **C:\Users\WindowsUserName\AppData\Local**

❗ Replace “WindowsUserName” with the username you used to login to your machine, e.g. admin, demo, user01, jdoe, jdacruz.

8. Click “Go” to open the “Local” folder.
9. Copy the “SalveoRx” folder to your target device or location.
10. If you are prompted to “overwrite”, click “Yes to All”.



**Figure 3.0: XP Backup – SalveoRx folder**



**Figure 4.0: Vista Backup – SalveoRx folder**

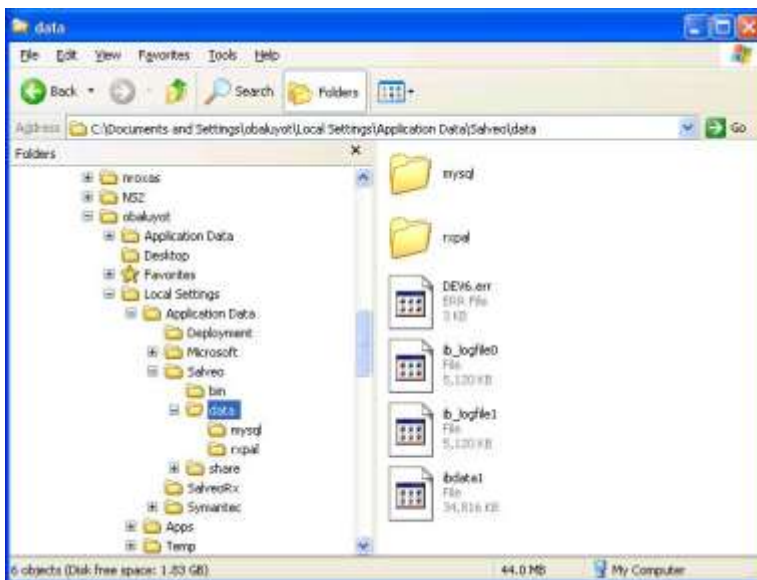
### Restore

Restore your backup data from any storage media (e.g. flash drives, external hard drives, CD's, or DVD's, etc) to your target SalveoRx machine.

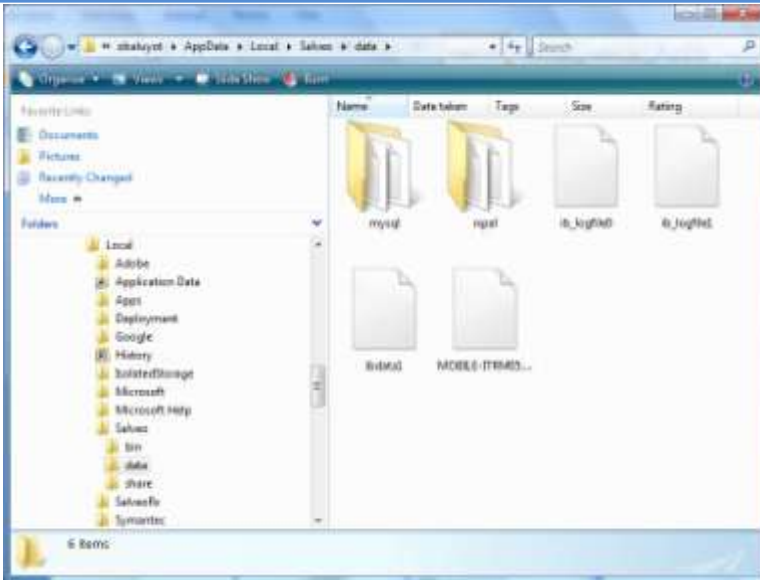
1. Open your storage media or the location containing the data folder.
2. Copy the following files contained in this data folder:
  - a. ib\_logfile0
  - b. ib\_logfile1
  - c. ibdata1
3. Enter the following path in the "Address bar" given that you are using:
  - a. If XP > **C:\Documents and Settings\WindowsUserName\Local Settings\Application Data\Salveo\data**
  - b. If VISTA > **C:\Users\WindowsUserName\AppData\Local\Salveo\data**

⚠ Replace "WindowsUserName" with the username you used to login to your machine, e.g. admin, demo, user01, jdoe, jdlacruz.

4. Click "Go" to open the "data" folder.
5. Paste the following files in the "data" folder:
  - a. ib\_logfile0
  - b. ib\_logfile1
  - c. ibdata1
6. If you are prompted to "overwrite", click "Yes to All".




**Figure 5.0: XP Restore – data folder**



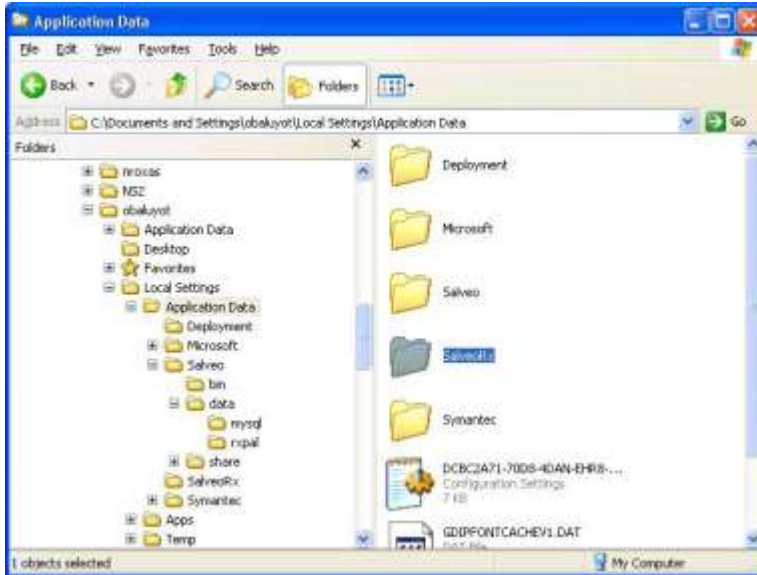
**Figure 6.0: Vista Restore – data folder**

7. Open again your storage media or the location containing the SalveoRx folder.
8. Copy the “SalveoRx” folder.
9. Enter the following path in the “Address bar” given that you are using:

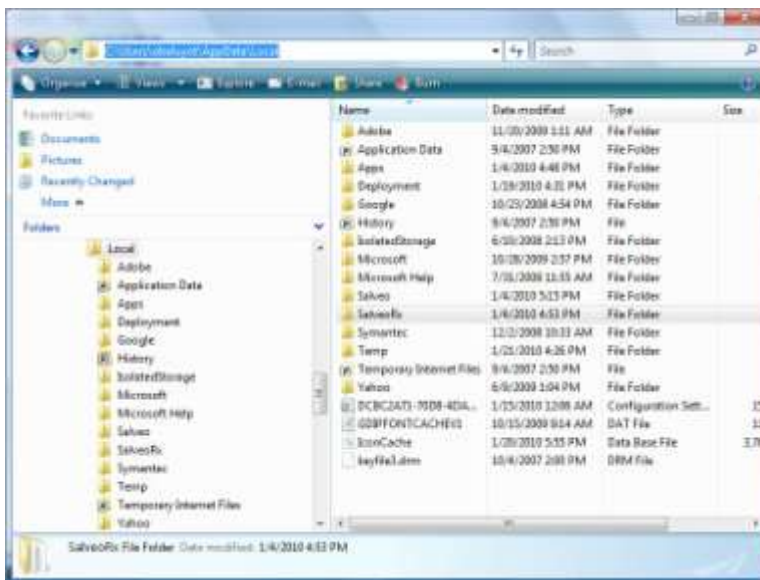
- a. XP > **C:\Documents and Settings\WindowsUserName\Local Settings\Application Data**
- b. VISTA > **C:\Users\WindowsUserName\AppData\Local**

 Replace “WindowsUserName” with the username you used to login to your machine, e.g. admin, demo, user01, jdoe, jdacruz.

10. Click “Go” to open the “data” folder.
11. Paste the “SalveoRx” folder in the “Local” folder.
12. If you are prompted to “overwrite”, click “Yes to All”.
13. Run “SalveoRx” to verify a successful restore procedure.
14. Check all modules and stored data.



**Figure 7.0: XP Restore – SalveoRx folder**



**Figure 8.0: Vista Restore – SalveoRx folder**